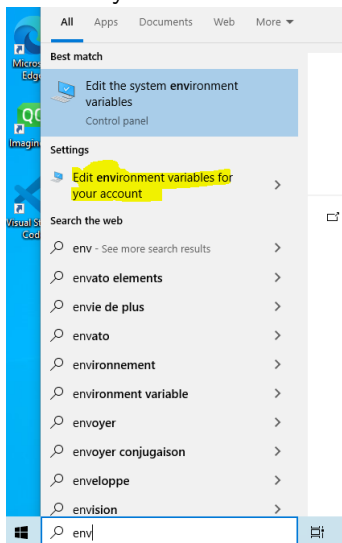


VSCoDe Usage on Windows

- ▶ After all-in-one installation:
`https://imagine.enpc.fr/~monasse/Imagine++/install_windows.html`
- ▶ you have CMake, the C++ toolchain (mingw32), the Qt libraries (so as QtCreator, which you don't use) and Imagine++ libraries under the folder `C:\ENPC`
- ▶ We are going to configure VSCoDe so that it finds them.

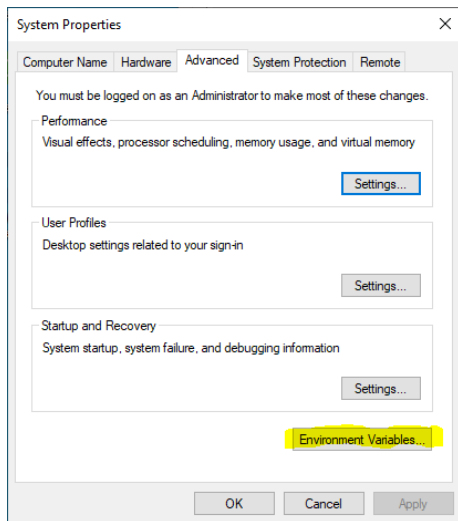
VSCode Usage on Windows

- ▶ First, we set environment variables:
- ▶ In the Windows menu, type `env` then select “Edit environment variables for your account”.



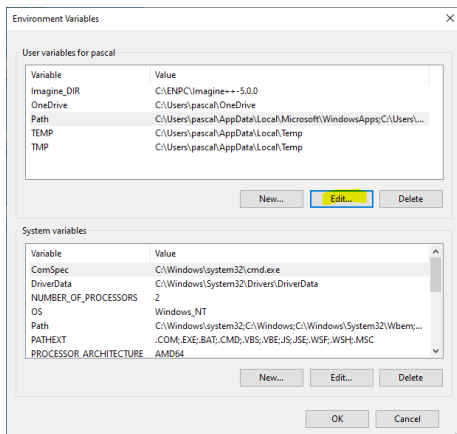
VSCode Usage on Windows

- ▶ First, we set environment variables:
- ▶ Click the button “Environment Variables. . .”



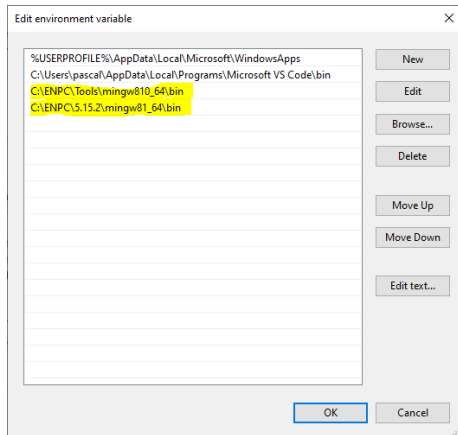
VSCode Usage on Windows

- ▶ First, we set environment variables:
- ▶ You may notice that `Imagine_DIR` was set by the installer.
- ▶ Edit the `Path` environment variable



VSCode Usage on Windows

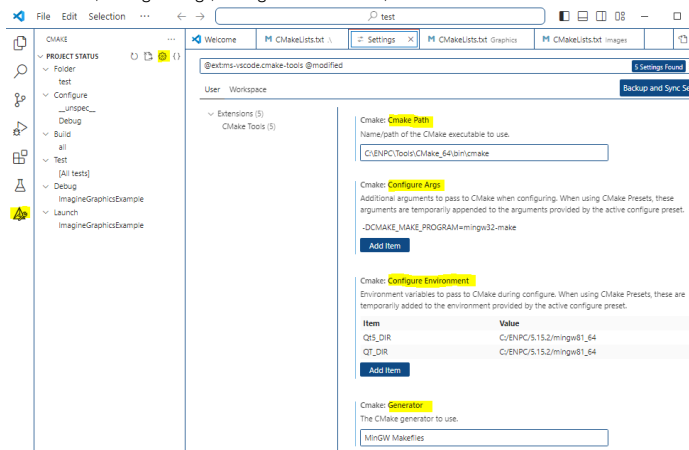
- ▶ First, we set environment variables:
- ▶ Append the following two paths through the “New” button (instead of typing, you may select them with the button “Browse...”), then click “OK” button and you may close the control panel.



VSCoDe Usage on Windows

- ▶ If VSCode was already running, you need to close and restart it so that the environment variables take effect.
- ▶ Install the CMake extension (by Microsoft), click its icon, then the gearwheel, set the following fields:

CMake Path, Configure Args, Configure Environment, Generator.



The screenshot shows the VS Code interface with the CMake extension settings open. The left sidebar shows the project structure with folders like 'test', 'Configure', 'Build', and 'Launch'. The main window displays the settings for the CMake extension, including fields for CMake Path, Configure Args, Configure Environment, and Generator.

Settings for CMake extension:

- Cmake: Cmake Path**
Name/path of the CMake executable to use.
C:\ENPC\Tools\CMake_64\bin\cmake
- Cmake: Configure Args**
Additional arguments to pass to CMake when configuring. When using CMake Presets, these arguments are temporarily appended to the arguments provided by the active configure preset.
-DCMAKE_MAKE_PROGRAM=mingw32-make
- Cmake: Configure Environment**
Environment variables to pass to CMake during configure. When using CMake Presets, these are temporarily added to the environment provided by the active preset.

Item	Value
Qt5_DIR	C:/ENPC/5.15.2/mingw81_64
QT_DIR	C:/ENPC/5.15.2/mingw81_64
- Cmake: Generator**
The CMake generator to use.
MinGW Makefiles